

## St Mary's Church of England Primary School

Fowler Road, Islington, London N1 2EP

Tel: 020 7359 1870 Email: [school@stmarys.islington.sch.uk](mailto:school@stmarys.islington.sch.uk)

[www.stmarys.islington.sch.uk](http://www.stmarys.islington.sch.uk)

Headteacher: Miss Genevieve Prayag



# Reception Learning Outline

Dear Parents/Carers,

St Mary's school has created class learning packs to support your child's learning in the event of your family's self-isolation/school closure following the increasing spread of coronavirus (COVID-19). Please also check the school website for updates to home learning activities. With our best wishes, The St Mary's School Staff Team.

Please see below suggested activities for each area of learning;

### Reading

We recommend that children read independently (with adult support) for approximately 30 minutes per day.

### Writing

#### Handwriting activities:

- Handwriting packs

#### Creative writing tasks:

- Children can keep a journal of the activities they did daily. How did they feel?

### R/KS1 Phonics

- Phonics phase pack

### Maths

- Topmarks([www.topmarks.co.uk](http://www.topmarks.co.uk)): Has a variety of free activities linked to different mathematical areas including Times tables, number bonds and mental maths.
- Hit the button and the daily 10 maths challenge ([www.topmarks.co.uk](http://www.topmarks.co.uk)): are good for quick fire questioning based on maths operations (addition, subtraction, multiplication and division).
- Counting activities

#### Maths mastery:

- Mastery questions based on what we have been learning about.





## St Mary's Church of England Primary School

Fowler Road, Islington, London N1 2EP

Tel: 020 7359 1870 Email: [school@stmarys.islington.sch.uk](mailto:school@stmarys.islington.sch.uk)

[www.stmarys.islington.sch.uk](http://www.stmarys.islington.sch.uk)

Headteacher: Miss Genevieve Prayag

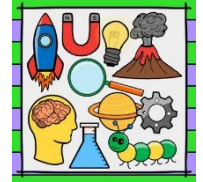


# Reception Learning Outline

## Creative curriculum

### Science activities:

- Creative Homework
  - Choose your favourite material and create a setting from your favourite story using this material.
  - You can draw the setting with labels or physically make one.



### The wider creative curriculum:

- Learning the school vision and being able to recite it off by heart. This can be found on our school website: <https://www.stmarys.islington.sch.uk/>
- Reception and KS1 Physical and social skills

<https://www.topmarks.co.uk/parents/learning-through-cooking-physical-and-social-skills>

### RE:

- Create the story of Easter through art/ writing.



# St Mary's Church of England Primary School

Fowler Road, Islington, London N1 2EP

Tel: 020 7359 1870 Email: [school@stmarys.islington.sch.uk](mailto:school@stmarys.islington.sch.uk)

[www.stmarys.islington.sch.uk](http://www.stmarys.islington.sch.uk)

Headteacher: Miss Genevieve Prayag



## Reception Learning Outline

### Key online links to use at home:



[www.twinkl.co.uk/offer](http://www.twinkl.co.uk/offer)

Sign up to Twinkl by using the code CVDTWINKLHELPS to have access to the resources free for one month.



[www.whiterosemaths.com/resources/schemes-of-learning/primary-sols/](http://www.whiterosemaths.com/resources/schemes-of-learning/primary-sols/)

Maths home learning packages for schools and families to use due to school closures.



<https://family.gonoodle.com/>

To stay active and give our brains a break, use this website- it's free to use!

### Useful online links to use at home:



<https://www.topmarks.co.uk/>

A free website with a range of activities across the curriculum. Great for maths games.



<https://www.lgfl.net/>

A free website with a range of activities across the curriculum.

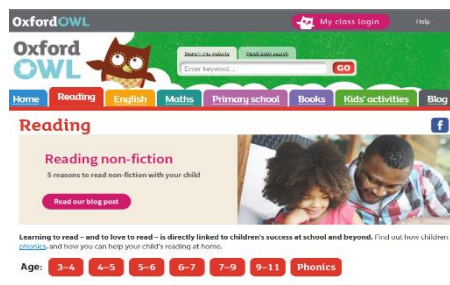


<https://hungrylittleminds.campaign.gov.uk/>. Hungry Little Minds, the DfE website, has activities broken down by age with a 'chat, play, read' emphasis. There are accompanying video clips and links to other sites and apps.



<http://www.pobble365.com/>

This website provides picture stimuli and story starters to encourage creative writing.



<https://www.oxfordowl.co.uk/for-home/reading>

You can access free eBooks once you have created an account.

### Other useful links aimed at Early Years:

<https://www.bbc.co.uk/tiny-happy-people>.

<https://theimaginationtree.com/stay-at-home-survival-guide/>.

<https://abccdoes.com/abc-does-a-blog/2020/03/14/at-least-50-fantastic-ideas-to-try-at-home/>

The Bright Start Bright Ideas newsletter (a Government backed scheme run by our fantastic Early Years Team at Islington Council) goes out every two weeks although if schools close, they are planning to make this more regular, possibly daily. You can subscribe here;

<http://bit.ly/BSBIsubscribe>;