



St Mary's Church of England Primary School

Fowler Road, Islington, London N1 2EP

Tel: 020 7359 1870 Email: school@stmarys.islington.sch.uk

www.stmarys.islington.sch.uk

Headteacher: Miss Genevieve Prayag



Year 2 Learning Outline

Dear Parents/Carers,

St Mary's school has created class learning packs to support your child's learning in the event of your family's self-isolation/school closure following the increasing spread of coronavirus (COVID-19). Please also check the school website for updates to home learning activities. With our best wishes, The St Mary's School Staff Team.

Please see below suggested activities for each area of learning;

Reading

We recommend that children read for up to 30 minutes per day.

Task linked to reading:

- SATs reading papers
- Book review

Writing

Handwriting activities:

- Handwriting packs

Creative writing tasks:

- login to google classroom for weekly task

Grammar tasks:

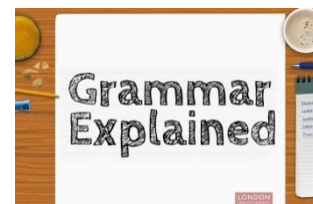
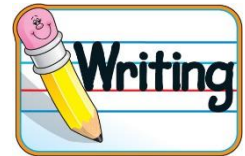
- Grammar Explained on LGFL
- Practice SPaG SATs paper.

Spelling tasks:

- Common exception words activity booklet

R/KS1 Phonics

- Phonics phase packs





St Mary's Church of England Primary School

Fowler Road, Islington, London N1 2EP

Tel: 020 7359 1870 Email: school@stmarys.islington.sch.uk

www.stmarys.islington.sch.uk

Headteacher: Miss Genevieve Prayag



Year 2 Learning Outline



Maths

Daily mathematics using your mathematics login.

Topmarks(www.topmarks.co.uk): Has a variety of free activities linked to different mathematical areas including Times tables, number bonds and mental maths.

Hit the button and the daily 10 maths challenge (www.topmarks.co.uk): are good for quick fire questioning based on maths operations (addition, subtraction, multiplication and division).

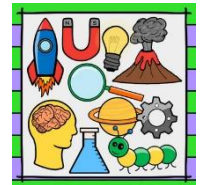
Maths assessment:

- Year 2 SATs practice papers

Creative curriculum

Science activities:

- Creative homework task based on topic of materials.
 - Children to research which materials are used most often to create waterproof clothing.
 - Create an accessory that is waterproof, for example a hat, scarf, umbrella or coat.



The wider creative curriculum:

- Learning the school vision and being able to recite it off by heart. This can be found on our school website: <https://www.stmarys.islington.sch.uk/>
- Mindfulness colouring sheets
- Social skills

<https://www.topmarks.co.uk/parents/learning-through-cooking-physical-and-social-skills>

RE:

- Create the story of Easter through art/ writing

We do encourage all children to make sure that they are doing regular movement breaks and keeping active. This has great mental and physical effects!



St Mary's Church of England Primary School

Fowler Road, Islington, London N1 2EP

Tel: 020 7359 1870 Email: school@stmarys.islington.sch.uk

www.stmarys.islington.sch.uk

Headteacher: Miss Genevieve Prayag



Year 2 Learning Outline

Key online links to use at home:



www.twinkl.co.uk/offer

Sign up to Twinkl by using the code CVDTWINKLHELPS to have access to the resources free for one month.



www.whiterosemaths.com/resources/schemes-of-learning/primary-sols/

Maths home learning packages for schools and families to use due to school closures.



Please see the Google Classroom letter.

Useful online links to use at home:



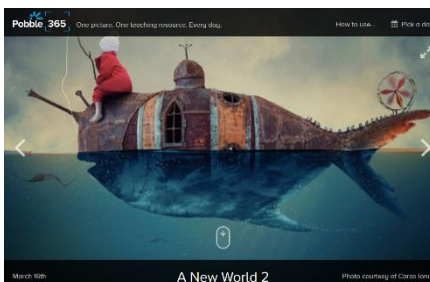
<https://www.topmarks.co.uk/>

A free website with a range of activities across the curriculum. Great for maths games.



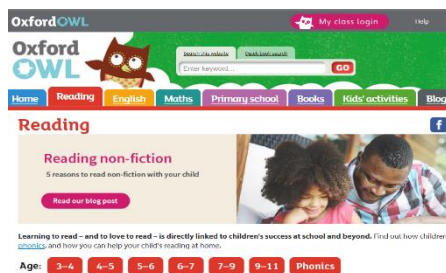
<https://www.lgfl.net/>

A free website with a range of activities across the curriculum.



<http://www.pobble365.com/>

This website provides picture stimuli and story starters to encourage creative writing.



<https://www.oxfordowl.co.uk/for-home/reading>

This website is free but you can access free eBooks once you have created an account.



<https://www.bbc.co.uk/teach/supermovers>

A free and fun way to practice times tables! This site also has activities for English and PSHE.