



St Mary's Church of England Primary School

Fowler Road, Islington, London N1 2EP

Tel: 020 7359 1870 Email: school@stmarys.islington.sch.uk

www.stmarys.islington.sch.uk

Headteacher: Miss Genevieve Prayag



Year 3 Learning Outline

Dear Parents/Carers,

St Mary's school has created class learning packs to support your child's learning in the event of your family's self-isolation/school closure following the increasing spread of coronavirus (COVID-19). Please also check the school website for updates to home learning activities. With our best wishes, The St Mary's School Staff Team.

Please see below suggested activities for each area of learning;

Reading

We recommend that children read for up to 30 minutes per day.

Task linked to reading:

- Comprehension activity, reading and answering questions.

Writing

Handwriting activities:

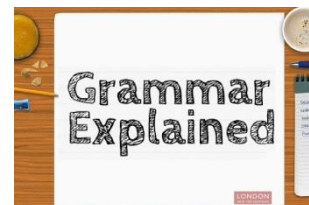
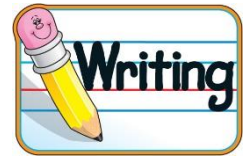
- Nelson Handwriting activities.

Creative writing tasks:

- Log in to Google Classroom for weekly task.

Grammar tasks:

- Log in to LGFL to access resources on Grammar Explained.





St Mary's Church of England Primary School

Fowler Road, Islington, London N1 2EP

Tel: 020 7359 1870 Email: school@stmarys.islington.sch.uk

www.stmarys.islington.sch.uk

Headteacher: Miss Genevieve Prayag



Year 3 Learning Outline



Maths

Daily mathematics using your mathematics login.

Topmarks(www.topmarks.co.uk): Has a variety of free activities linked to different mathematical areas including Times tables, number bonds and mental maths.

Hit the button and the daily 10 maths challenge (www.topmarks.co.uk): are good for quick fire questioning based on maths operations (addition, subtraction, multiplication and division).

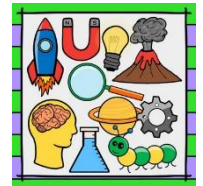
Maths Revision:

- Measurement, Multiplication and Division revision work.

Creative curriculum

Science activities:

- Creative Homework: **Light**
 - At different times of the day, observe the shadows outside the window and where they are. Create a drawing with your observations of where the shadows were at different times of the day.
 - Think about: Where was the sun? What time was it? How did the shadows move? Did the shadows become bigger or smaller?



The wider creative curriculum:

- Learning the school vision and being able to recite it off by heart. This can be found on our school website: <https://www.stmarys.islington.sch.uk/>
- RE: Retell the story of Easter through Art.



St Mary's Church of England Primary School

Fowler Road, Islington, London N1 2EP

Tel: 020 7359 1870 Email: school@stmarys.islington.sch.uk

www.stmarys.islington.sch.uk

Headteacher: Miss Genevieve Prayag



Year 3 Learning Outline

Key online links to use at home:



www.twinkl.co.uk/offer

Sign up to Twinkl by using the code CVDTWINKLHELPS to have access to the resources free for one month.



www.whiterosemaths.com/resources/schemes-of-learning/primary-sols/

Maths home learning packages for schools and families to use due to school closures.



Please see the Google Classroom letter.

Useful online links to use at home:



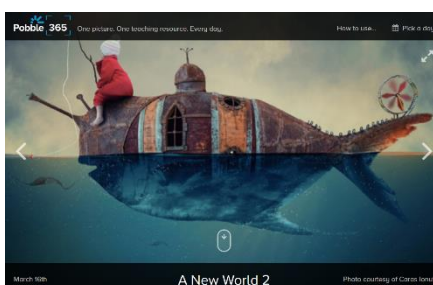
<https://www.topmarks.co.uk/>

A free website with a range of activities across the curriculum. Great for maths games.



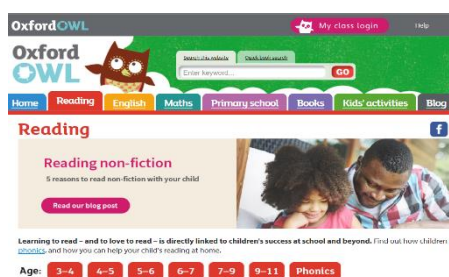
<https://www.lgfl.net/>

A free website with a range of activities across the curriculum.



<http://www.pobble365.com/>

This website provides picture stimuli



<https://www.oxfordowl.co.uk/for-home/reading>

This website provides



<https://www.bbc.co.uk/teach/supermovers>