

**Offer day:
1 March
2021**

Islington Schools: Inspiring Learning and Achievement

Your guide to the school application process
for children born between:

1 September 2009 and 31 August 2010

Closing date: 31 October 2020

Location map

Key

- Secondary schools
- ✈ Rail stations
- ⊖ Underground stations
- Parks and open space
- Major roads
- Minor roads
- ++ Rail lines

1. Arts and Media School, Islington
2. Beacon High
3. Central Foundation Boys' School
4. City of London Academy, Highbury Grove
5. City of London Academy, Highgate Hill
6. City of London Academy, Islington
7. Elizabeth Garrett Anderson School
8. Highbury Fields School
9. St Aloysius' College
10. St Mary Magdalene Academy



Welcome

Providing good quality schools for Islington's young people is a top priority for the borough. We are passionate about supporting children and young people to have the best start in life and providing high-quality learning lies at the heart of that ambition.

The coronavirus pandemic meant the last school year was like no other in living memory. The challenges facing children, teachers and parents have been unprecedented. Our schools already had a lot to be proud of, but their response to the crisis served to emphasise even more, the incredible job teachers do and how important schools are to our communities.

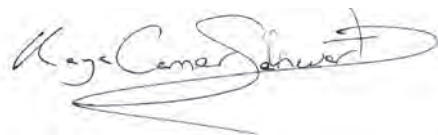
Islington, along with the rest of London, is leading the country in terms of positive outcomes for many pupils in our schools. 98% of Islington Y11 leavers moved into education, employment or training with most remaining in learning. Our ambition is for local schools to continue to improve, through strong leadership, rigorous standards and creative teaching. We want every child to be given the attention they need to develop and thrive, whatever their background or ability.

We have an outstanding extracurricular offer too, which helps build life skills and equips young people with the skills they need to have a fulfilling future. We pledge to provide 100 hours' experience of the 'World of Work' by the time a young

person reaches the age of 16. Our '11 by 11' programme seeks to give all young people equal access to the world-famous cultural opportunities on their doorstep. And our partnership with Guildhall School of Music and Drama opens a wealth of opportunities to access world-class music education.

Some secondary children are also eligible for free school meals and can receive a school uniform grant too. All of this is part of our commitment to a fairer Islington and our ambition to make Islington the best place for young people to grow up in.

This brochure gives you all you need to know to make an informed decision about the right secondary school for your child. If you need any help or advice about making an application, our School Admissions team is here to help. Finally, may I take the opportunity to wish your child every success as they move into secondary education.



Councillor Kaya Comer Schwartz
Executive Member for Children,
Young People and Families



Contents

Section 1: Before you apply

About schools in Islington	6
Dates to remember	7
Top tips before you apply	8
Our pledge to you	10

Section 2: How to apply

Apply online	12
About school applications	14
Admission criteria for community schools	22
Multiple births	25
Criteria flowchart	26
Table of school places	27

Section 3: What happens next

What happens to your application?	29
Offer Day	29
Waiting lists and appeals	30
University Technical Colleges and Studio Schools	32
Applying during the school year	33

Section 4: Islington's schools

Arts and Media School, Islington	36
Beacon High	37
Central Foundation Boys' School	38
City of London Academy, Highbury Grove	39
City of London Academy, Highgate Hill	40
City of London Academy, Islington	41
Elizabeth Garrett Anderson School	42
Highbury Fields School	43
St Aloysius' College	44
St Mary Magdalene Academy	45
Dame Alice Owen's School, Potters Bar	46

Section 5: Sixth Form options

City and Islington Sixth Form College	48
Islington Sixth Form Consortium (IC6)	49
London Screen Academy	50
St Aloysius' College Sixth Form	51
St Mary Magdalene Sixth Form	52

Section 6: Useful information and contacts

Islington's Progress Pledge	54
Financial Assistance	55
Additional educational needs	57
Attendance matters: every day counts!	58
Getting to School	59
Glossary	60
Key dates	63

**Don't forget -
apply online by
31 October 2020**



Section 1: Before you apply

About schools in Islington

Did you know that in 2019, Islington secondary schools were in the top third of schools nationally for progress at GSCE?

We are extremely proud of this and are determined to achieve our ambition of ensuring outstanding teaching and learning in all our secondary schools.

The aim of this brochure is to help you make an informed decision about which school will best suit your child. If you do need any extra information, please email us with your query at admissions@islington.gov.uk or call us on 020 7527 5515.

Islington's Community of Schools

Islington's Community of Schools work closely with one another to meet the diverse needs of children living or going to school in the borough.

The Community of Schools is made up of academies, community, foundation, free, trust, and voluntary-aided schools. For details of how these schools operate, please refer to the [glossary](#).



Dates to remember

Date	What happens?
September 2020	You can apply online from 1 September 2020 to 31 October 2020
23 October 2020	Recommended application return date: submit your online application by this date. If you miss the deadline, your application will not be processed until after all on time applications
31 October 2020	Application deadline: this is the final date for you to submit your application online. We strongly recommend that you submit your application by 23 October 2020
29 November 2020	Exceptional social/medical application deadline: you must submit your application and supporting documentation by this date in order for it to be considered alongside all on time applications
1 March 2021	Offer day: you will receive your result by email in the evening of 1 March 2021
15 March 2021	Acceptance deadline: you must accept (or decline) your school place by this date. You can do this online.
2 April 2021	Appeal deadline: submit your online appeal for an Islington community school by this date. For other types of schools, please refer to the school's website. Remember, you can still appeal even if you have accepted a place at a different school.
31 December 2021	Waiting Lists: Your child's name will automatically be removed from all waiting lists. To add your child to a waiting list, you will need to submit an in-year application .

Top tips before you apply



1. Apply on time – only 40% of applicants who applied late were offered one of their preferred schools compared to 93% of on time applicants
2. Check the school website – there is a wealth of useful information available
3. Visit schools – this is the best way to get a ‘feel’ for the school. You can meet a member of the leadership team, ask questions and see the school in action*
4. Think about what is right for your child – don’t rely on what others tell you, visit the school and see first-hand
5. Talk to your child – involve them as much as you can
6. Think about the journey – how easy will it be to get to the school? Some schools may be further away but are easier to get to
7. Check the admission criteria and cut-off distance – how likely is it that your child will be offered a place? You can check this by clicking on the link in the school fact file
8. Use all six preferences – make sure you include at least one local school
9. Ask the School Admissions team for advice – they can’t tell you which schools to apply for, but they can explain the admission criteria and check whether you would have got a place last year
10. Make sure you press ‘**submit**’ when you finish your online application. You should then receive a reference number confirming safe receipt.

DON'T:



- 1.** List private schools on your application – you should apply directly to the private school
- 2.** Wait till the last minute to apply – you may have a problem getting online or logging on. Give yourself plenty of time to think things through carefully
- 3.** List only one school – your application will not be treated more favourably and you could lose out on another school you like.

**Don't forget -
apply online by
31 October 2020**

Our pledge to you

Islington Council is committed to providing quality customer service. We make the following promise to everyone who lives, works in, or visits the borough:

- We will be fair in the way we deliver services and treat everyone equally, with courtesy and respect
- We will provide polite, welcoming and efficient services that are accessible to all
- We will provide helpful information and secure transactions on our website
- We will answer our phones quickly and endeavour to deal with your enquiry or issue during your first call. If we can't we will call you back the next working day
- We will respond to your emails and letters in plain English within ten working days
- We will respond to your complaints within 21 days
- We will seek your feedback on the services we provide and publish the results on our website.

Section 2: How to apply



Apply online

If you live in Islington, you need to apply using [Islington's online application form](#).

When can I apply?

You can apply from **1 September 2020** until **31 October 2020**.

Applications made by the deadline are 'on time' and will be processed before 'late' applications made after this deadline.

We strongly recommend that you submit your application by **Friday 23 October 2020** (the week before half term) in case there are any issues with submitting your application (e.g. problems with internet access, forgotten username or password etc.).

Why apply online?

1. You can do your application in stages. You can review the order of schools listed, and other information as many times as you want before you submit the online application.
2. The online system checks for errors or missing information.
3. The system is secure and your information is safe.
4. A reference number is sent to your registered email confirming safe receipt of your application.

5. There is no need to pay for postage.

How do I get started?

You will need an email address. You can register for a free email account with a number of providers. The London e-Admissions system recommends Gmail. [Click here to create an account](#). For instructions on how to do this, watch this handy [YouTube](#) tutorial.

I have an email address, what next?

[Click here to access the London e-Admissions system](#) and register your email address. Once you have done this, you will receive an email explaining how to make your application.

When do I find out which school has been offered?

National Secondary Offer Day is **1 March 2021**. In the evening:

- you will receive an email telling you which school has been offered
- OR
- you can log on to the London e-Admissions system to view your offer online.

Who can help me with the online application?

The School Admissions team can offer telephone advice and talk you through the online application.

The team also offers one to one support. Please call 020 7527 5515 to arrange an appointment.

For technical queries and assistance, please contact the London

e-Admissions helpdesk:

E: support@eadmissions.org.uk

T: 020 8255 5555 (Option 1)

ParentComms

Why not sign up for ParentComms? Using the app, you will be able to receive the outcome of your application on your mobile device. You can download the free ParentComms app from the [Apple AppStore](#), [Google Play](#) or [Windows Phone Store](#) by registering your username and password. You will receive reminders about the closing date and any pending applications that need to be submitted by the deadline.

Make a note

Please make a note of the following details as you will need this information to access your application, and offer in March:

Application Reference Number:

Username:

Password:

About school applications

What you need to know

1. Who should I apply to?

You must apply to the local authority **where your child lives**. Islington residents should [apply online here](#).

2. Do I need to apply if my child's older sibling already attends my preferred school?

Yes, you must apply even if your child's older sibling already attends the school.

If you do not apply, your child may be left without a school place.

3. How many schools can I pick?

You can list up to six schools. These schools can be located in Islington or in another local authority.

4. Have I got more chance of getting the school I want if I only list that school?

There is no advantage in listing only one or two schools. In fact, we highly recommend that you pick six schools, and include a local school.

5. Is my first preference given higher priority?

Each of your schools is considered separately, without the preference position being taken into account. This process is known as the '**Equal Preference**' system.

This means that first and sixth preferences are processed in the same way.

Your child will **not** get higher admission priority if you list a school as a first preference, and your preference order is **never** disclosed to schools.

6. So, why ask me to list schools in the order I prefer?

Preference order only comes into play **if** your child qualifies for admission to more than one of your preferred schools.

For example, if your child lives within the ‘**cut-off**’ distance for two or more schools, the application system (**PLR**) automatically offers the highest preference possible.

So, if your child is eligible for a place at both your first and fifth preference schools, the system will select the highest preference possible, which in this case is your first preference school. This is why you should list schools in the order you most prefer, with your favourite school first.

7. So why not offer my child more than one school if this happens?

Only **one** offer can be made to each child. This is to make sure that every child receives an offer of a school place on Offer Day. It would not be fair for some children to receive two or three offers while others get none.

8. What happens to my other preferences?

All lower preferences are put back into the system so they can be offered out to other children.

So, if your child receives an offer at your third preference school, lower preferences are put back into the system but your child is automatically placed on the waiting lists of all your higher preference schools.

This means that if a place becomes available at your first preference school, we will contact you to make that offer.

9. How do you decide who gets a place at which school?

Every school must say how places will be allocated if there are more applications than places available. This is done by applying criteria – referred to as **admission criteria** or **oversubscription criteria**.

10. How do I know what the admission criteria are?

Every school **must** publish this information on their website. It is really important that you read and understand the admission criteria so you can make informed decisions about which schools to apply for.

All schools use distance as a way of prioritising applicants. However, other applicants are given higher priority – e.g. some schools prioritise siblings or children of a particular faith.

If you need help with understanding the admission criteria, the School Admissions team can help.

11. Can I get advice on which schools I should choose?

We cannot give advice on which schools to pick as this is a personal matter, but we do advise you to:

- Visit the schools you are interested in so you can meet the staff, ask questions and, get a ‘feel’ for the school. (While the Covid-19 restrictions remain in place, please call the school first to check the tours are still going ahead).
- List at least one of your nearest schools, in case it is not possible to offer your child a place at one of your preferred schools.
- Note that although there is no guarantee of a place at a local school, it is true to say that your child is more likely to get a place as the majority of applicants are admitted under the ‘**distance criterion**’, which gives priority to children living closest to the school.

12. What happens if it is not possible to offer a place at one of my preferred schools?

We will reserve a place at your child's nearest Islington school with a vacancy and provide you with a list of all schools in the borough that still have places. You can accept the school offered or choose an alternative.

Your child will also remain on the waiting lists of all your preferred schools and if a place becomes available, we will contact you to make the offer.
Don't risk being left without a school place.

13. Can I list private schools on the form?

No. You need to apply for a place directly with the private school using their application form.

14. What about faith schools?

Yes, you can list these on the application form but you need to check whether you need to complete a supplementary information form (SIF). For Islington faith schools, this

information is included in each school's fact file in this brochure.

15. When do I need to make a final decision?

You must submit your online application by **31 October 2020** for it to be on time. When you apply online you can change the order of your preferences right up until the deadline.

- Remember to press **submit** when you have made your final decision.
- Make sure you apply by the deadline of **31 October 2020**.
- If your application is late the chances of getting a place at one of your preferred schools is likely to be reduced.

16. I am finding this really stressful. Who can help me?

We understand that this is a difficult time for you, with lots of different things to consider. The School Admissions team is on hand to help. Do contact us and we will do our very best to assist you.

T. 020 7527 5515

E. admissions@islington.gov.uk

Application address

The address that we will use to process your application will be your child's permanent address on **31 October 2020**. We can only use one address. This must be the official address where your child spends most of their time Monday to Friday. We are unable to use a **future** or **intended** address for the purpose of school admissions.

Please note that we may not accept a temporary address if you still possess a property that was previously used as a home address; nor accept a temporary address if it is used solely or mainly to obtain a school place.

We may also carry out additional checks with the new school to see whether the child's home address has changed since the application was completed and will investigate all applications where:

- there are any doubts about the information originally provided
- information has been received from a member of the public to suggest misleading information has been provided and a fraudulent application made

- the council tax account is in a different name from the applicant's.

The provision of false or misleading information will result in the school place being withdrawn, and may lead to prosecution.

Whistleblowing

Islington Council takes a firm stand against any attempt to obtain a school place by fraud. If you provide false or deliberately misleading information whilst completing a school admissions application, or use a temporary address intentionally for the purpose of gaining an advantage over other applicants, your application will become void.

If you know someone who intends to use, or has used, a false address to obtain a school place, you can report this confidentially to the Islington School Admissions team on 020 7527 5515 or email admissions@islington.gov.uk.

Shared parental responsibility

If parents live separately, but the child lives equally with both, then it is the parents' responsibility to make this clear at the time of the application and to provide supporting evidence in respect of both addresses, for example, a Residency Order from a court.

Please note that only one address can be used for school admission purposes and the final decision will rest with the Islington School Admissions team.

Proof of address

In order for us to verify your address, please provide your **council tax reference number** (you can find this on your council tax bill). If you cannot provide this, please provide a copy of your most recent rent, mortgage statement or tenancy agreement.

If you cannot obtain these documents, please provide at least two alternative documents. For example: utility bill; bank statement; GP, hospital, dentist or optician letter.

We also require proof that the child you are applying for lives with you. Therefore, please provide a copy of your most recent child benefit or family tax credit letter which clearly states your child's name and address.

If you do not receive child benefit or family tax credit, please provide at least two alternative documents to prove your child lives with you. For example: a letter from your child's GP, dentist, hospital, optician; or the page within your child's health record book that has his/her name and address.

Please ensure that copies of documents provided are not older than 12 months. Documents can be uploaded with your online admissions application. If we require further information, we will contact you. **Do not delay submitting your application if you do not have the appropriate proofs of address as we can offer advice on what to do next.**

Change of address

If your child moves after **31 October 2020**, then please provide a copy of the documents listed above. This is to ensure your application is handled correctly.

Children of UK service personnel or crown servants

If you, or your partner, are a serving member of UK forces with a confirmed posting to Islington, or a crown servant returning from overseas, we will use the posting address provided by your employer as long as you provide us with documentary supporting evidence of your relocation date and Islington address.

There is no guarantee that a place will be available at your preferred school; each application will be considered in line with the school's admission criteria. If an offer can be made, then that place may be held for a reasonable period, depending on individual circumstances.

If we cannot offer your child a place at your preferred school, then we will in advance of your

return, allocate the nearest Islington community school to your home address that has a place available. Where your child is first on the waiting list, we will ask the school to go over number and admit your child as an 'excepted' pupil in line with provisions in the School Admissions Code.

Late applications

If we receive your application after **31 October 2020** then your application will be late. This means it will not be considered until we have allocated school places for all applications received on time. This could reduce your chances of getting a place at the school you want.

If there are exceptional reasons why it was not possible to make your application by the deadline, please email us at admissions@islington.gov.uk providing any supporting documentation.

Privacy Notice

London Borough of Islington will handle the information you have provided in line with the provisions of the General Data Protection Regulation (GDPR) 2018. Any personal information will be held in confidence with only the necessary people able to see or use it. For more information about how we process personal data about you or your child, please [click here](#)



Admission criteria for community schools

Children with an Education, Health and Care Plan (EHCP)

If your child has an EHCP, they will be admitted to the school named in the EHCP. Please contact your SEND Keyworker for further information.

Admission or Oversubscription criteria

When more applications are received than there are places available, the following criteria will be used to decide which pupils are offered a place at an Islington community school in the order listed below:

1. Children looked after/ Previously looked after

This refers to children who are in the care of a local authority and children who have been adopted (or made subject to a child arrangements order or special guardianship order) immediately after being looked after.

2. Siblings

A sibling is defined as a brother or sister, half-brother or sister, step-brother or sister or adopted brother or sister, whose main

residence is at the same address.

This criterion will apply to applicants with a sibling living at the same address who is on the roll of the preferred school (years 7 to 11), or co-located Special School, at the time of the proposed admission in the new academic year.

3. Exceptional social/medical needs

The Director of Children's Services, on an individual basis, may give priority to applicants who can demonstrate that admission to a particular school is necessary on the grounds of professionally supported exceptional medical, social or special educational needs. Parents must supply details of any such special factors at the time of the original application (together with recent supporting documentation), to enable these factors to be considered.

If your child has an exceptional social (for example child protection/safeguarding issues) or medical need (for example if your child requires wheelchair access) to attend a specific Islington

community school, then please provide professional evidence (e.g. from a doctor or educational psychologist) and complete our social/medical application explaining why this is the only school that can meet your child's needs. The form is available for download [here](#). Please return the form by the deadline specified.

Your case will be considered by a panel comprising senior admissions officers and SEND specialists. The panel will consider the evidence presented and consult relevant professionals as necessary to determine:

- a. whether your child has an exceptional social or medical need and
- b. whether this need can only be met at a specific school.

Please note late applicants applying under the social/medical criterion can be prioritised only on the waiting list.

4. Distance

Applicants will be prioritised by distance (starting with the nearest). Nearness to schools is measured on

a computerised mapping system using a straight line distance measurement. Routes will be calculated from the home address (as defined by the Land and Property Gazetteer) to the midpoint of the school grounds (as determined by the London Borough of Islington).

Tie-breaker

Distance will be used as a tie-breaker for criteria 1, 2 and 3. If only one place is available and two or more children live an equal distance from the school, the child who will be offered the place will be determined by random allocation using a computerised system.

How we calculate home to school distances

We use the Capita ONE system to calculate the distance from your child's home (the start point) to the school (the end point). This system calculates the distance in miles to three decimal places. The routing database system uses two dimensional maps. This means it does not take into account any contours or terrains.

The start point (applicant's home)

For calculation purposes, Islington Council uses the National Land and Property Gazetteer (NLPG) database to determine the start point for Islington addresses. The starting points for other addresses are provided by your home local authority. Calculations are based on the assumption that the child's home address is classified at the point of application as a residential property.

If you live in a block of flats where you use a communal entrance, we will use the NLPG point for the block and not the centroid of your individual flat for the distance calculation.

The end point (school)

The centre of the school grounds is used as the end point for home to school distance as defined by Islington Council.

Please note that you cannot compare distances produced on Islington's Capita ONE system to those calculated using any personal

or online geographical information system software you may have access to such as satellite navigations systems or Google maps.

Islington residents can obtain an approximate distance measurement to any Islington school by using [Your Local Area](#).

Alternatively, you can call the School Admissions team for an approximate measurement on 020 7527 5515.

Cut-off distance

Cut-off distances vary from year to year, and are given only as a guide to help you assess the likelihood of being offered a place under the distance criterion.

Please note that living within the previous year's cut-off distance does not guarantee your child a place at the school.

Multiple births

If only one place is available at the school and the next child who qualifies for a place is one of multiple birth siblings, or has a sibling who is eligible for admission in the same year group, we will ask community schools to admit all siblings in order to support the family.

**Don't forget -
apply online by
31 October 2020**



Criteria flowchart

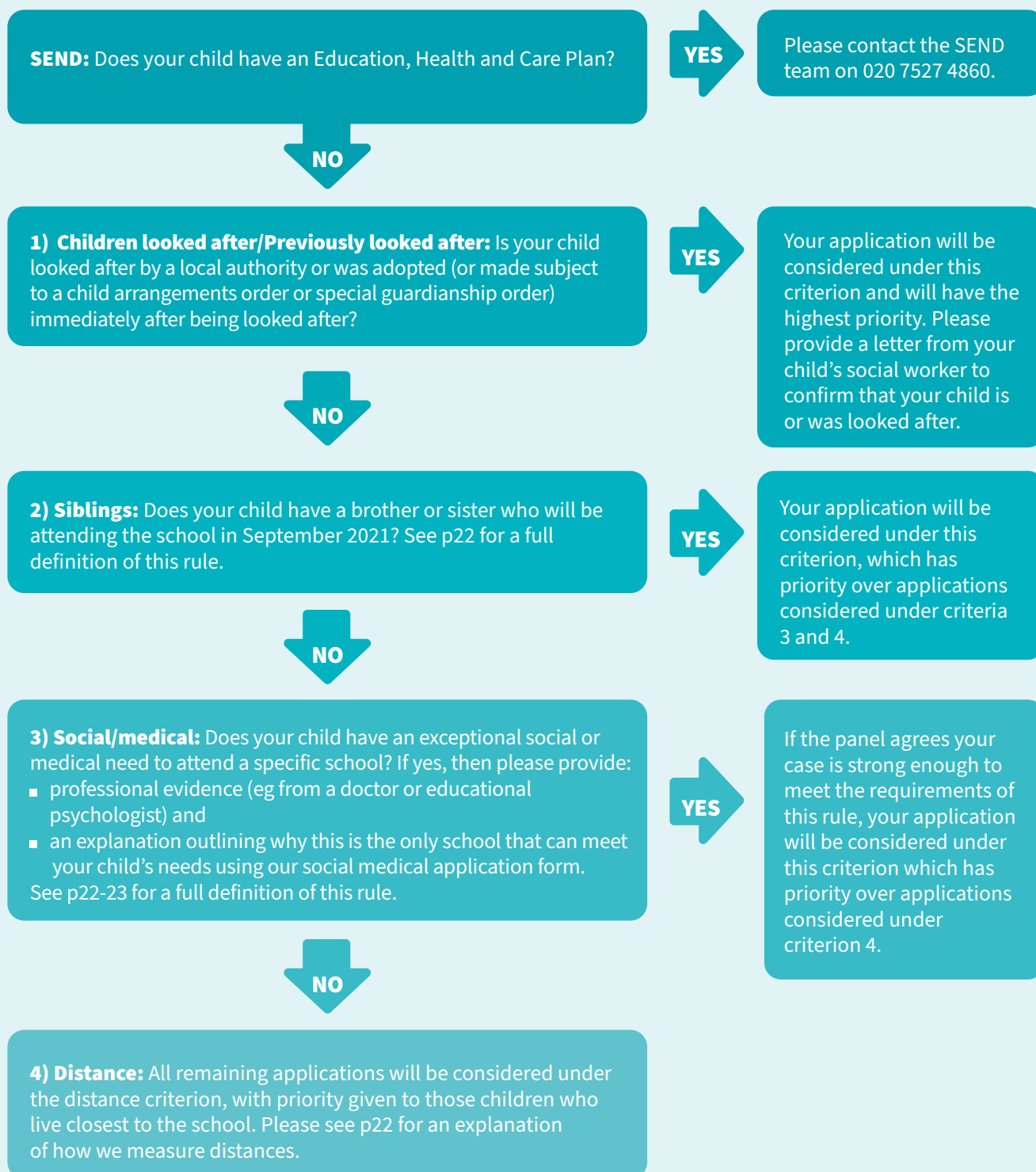


Table of school places

The table below provides a summary of information for Islington secondary schools for last year's admission round (admission in September 2020).

SCHOOL INFORMATION			APPLICATION INFORMATION		OFFER INFORMATION									APPEALS INFORMATION	
Name of school	Published admission number	School Type	Number of applications received	Number of first preference applications received	Number of children offered a place	Number admitted via the SEN process	Number offered under Children Looked After / previously Looked After criterion	Number offered under Sibling criterion	Number offered under social / medical criterion	Other criteria	Number offered under Distance criterion	*Number of children reserved a place at their nearest Islington school with a vacancy	Cut-off Distance (miles)	Number of appeals lodged / heard	Number of appeals upheld
Arts & Media School, Islington	150	Mixed Trust	332	88	150	3	0	35	1	N/A	82	29	Does not apply	0	0
Beacon High	120	Mixed Community	165	30	120	2	1	13	0	N/A	35	69	Does not apply	0	0
Central Foundation Boys' School	180	Boys Voluntary-Aided	549	208	180	6	3	45	N/A	N/A	126	0	Band 1: 1.205	4	1
													Band 2: 1.524	4	0
													Band 3: 2.244	0	0
													Band 4: 1.671	1	0
City of London Academy Highbury Grove	240	Mixed Academy	590	97	239	4	2	47	1	N/A	168	17	Does not apply	0	0
City of London Academy Highgate Hill	140	Mixed Academy	447	110	140	4	2	35	1	Children of Staff: 0	98	0	Band 1: 1.180	2	0
													Band 2: 0.906	2	0
													Band 3: 0.819	2	0
													Band 4: 0.733	2	1
City of London Academy Islington	165	Mixed Academy	718	178	165	1	2	37	5	City of London resident: 1	119	0	Band 1: 0.675	6	0
										Attending Richard Cloudesley: 0			Band 2: 1.116	1	1
													Band 3: 0.696	3	0
													Band 4: 0.799	2	0
Elizabeth Garrett Anderson School	180	Girls Community	550	181	180	7	4	43	3	N/A	123	0	0.907	18	2
Highbury Fields School	140	Girls Community	574	180	140	1	1	25	1	N/A	112	0	0.692	30	1
St Aloysius' College	180	Boys Voluntary-Aided Catholic	195	45	67	1	0	N/A	0	Faith: Not available	Not available	9	Band 1: Does not apply	0	0
										Music: Not available			Band 2: Does not apply	0	0
													Band 3: Does not apply	0	0
													Band 4: Does not apply	0	0
St Mary Magdalene Academy	210	Mixed Church of England Academy	1168	419	210	7	5	56	N/A	Primary School: 18	Open: 72	0	Open: 0.376	15	0
										Language: 21	Foundation: 31		Foundation: 1.038	5	0

Note: * Applicants who did not receive an offer at one of their stated preferences were reserved places at their nearest Islington school with a vacancy



Section 3: What happens next?

What happens to your application?

All London boroughs and some councils bordering London are part of the pan-London school admissions scheme. This makes applying for school places in the capital fairer and simpler.

How does it work?

A secure computer system is used to exchange information between councils when residents apply for schools outside the borough where they live.

Equal Preference

Every school you apply for is considered at the same time and your order of preference is kept confidential.

If your application meets the criteria for more than one school, you will be offered the highest preference possible and all lower preferences will be withdrawn and released to other children. So, make sure you put the school you really want first.

Each school has a set number of available places – check the school's fact file for details.

Admission Criteria (or Oversubscription Criteria)

Where a school receives more applications than there are places available (i.e. it is oversubscribed)

its published admission criteria will be used to decide which pupils will be offered the places – the school's fact file provides a link to the admission criteria. A summary of last year's results is provided in the [table of school places](#).

Offer Day

You will be informed of the outcome of your application on National Offer Day, **1 March 2021**. You can log onto eAdmissions from 5pm to find out the outcome of your application. You will also receive an email informing you of your result.

Please accept the place online by **15 March 2021**.

If you are an Islington resident and we cannot offer your child a place at any of the schools listed on your application, we will reserve a place at your nearest Islington community school with an available place. We will also inform you of where there are other vacancies to enable you to apply for alternative schools.

Waiting lists and appeals

Waiting lists

Your child's name will automatically be placed on the waiting list of any school listed as a higher preference on your original application than the school place offered.

Your child will remain on the waiting list until 31 December 2021. After this date, your child's name will be removed from all waiting lists. To add your child to a waiting list, you will need to submit an [in-year application](#).

Please note:

- being on a waiting list will not guarantee a place at your preferred school
- your child's waiting list position can go **down** as well as up
- waiting list positions are considered strictly in accordance with the school's admission criteria and are not affected by acceptance of a lower preference offer.

You can accept the place offered, remain on the waiting list of any higher preference school and lodge an appeal all at the same time.

Right of appeal

You have the right of appeal under the School Standards & Framework Act 1998 against the refusal of a place at any of the schools listed on your application.

An independent panel will hear your appeal and their decision is binding for both the Admission Authority and the school(s). The panel will be made up of people who have experience in education and lay members (people without personal experience of school management or the provision of education).

How do I lodge an admission appeal?

For Islington community schools, you can appeal online [here](#) by **2 April 2021**.

For other schools, contact the school directly to obtain an appeal form. The completed form should be returned to the school by the date given to you.

When will the appeal take place?

Provided you lodge your appeal for an Islington community school by the deadline above, your appeal will be heard in May or June 2021.

What does the appeal panel consider?

The appeal panel can only uphold an appeal (i.e. offer a school place) where:

1. The admission arrangements do not comply with legal requirements set out in the [School Admissions Code](#) and the [School Standards and Framework Act \(SSFA\) 1998](#)
2. The admission arrangements were not correctly or impartially applied
3. The decision to refuse admission was unreasonable given the circumstances of the case.

The panel must then decide whether the admission of additional children would **prejudice the provision of efficient education or the efficient use of resources**.

More information about appeals can be found [here](#).



University Technical Colleges and Studio Schools

You can apply for a place at either a University Technical College (UTC) or a Studio School if your child is born between 1 September 2006 and 31 August 2007.

As your child progresses through their secondary education, you may feel they would benefit from a more vocational curriculum offer focused on technical subjects.

University Technical Colleges (UTCs) are set up by universities and businesses and specialise in one or two technical subjects. In years 10 and 11 they offer a similar GCSE curriculum to a typical secondary school, including English and Maths, as well as their specialist subject. You can find out more at: www.utcolleges.org

Studio schools are similar to UTCs in that they have employer involvement in the curriculum and focus on developing skills needed for employment, involving personal coaching and work experience. They have a similar curriculum to a typical secondary school.

If you would like to apply for a UTC or Studio School, then you will need

to complete an online application with your **home local authority**. Islington residents can apply [here](#).

You must apply when your child is in Year 9, and submit your application by **31 October 2020**. If you apply after this date, your chance of getting a place at your preferred school may be reduced. You will be notified of the result of your application in the evening of **1 March 2021**.

If your child receives an offer of a place at a UTC or Studio School they will join the new school at the start of Year 10 in September 2021. **Your child must therefore continue to attend their current school for the remainder of Year 9.** Please let the school know that your child will be moving on in Year 10, and provide details of the new school.

For more information, please contact the School Admissions team on 020 7527 5515.

Applying during the school year

If you are an Islington resident applying for a secondary school place and your child is **not** due to start Year 7 in September 2021, you will need to complete Islington's online [In-Year School Admissions Application](#).

As Islington schools will be responsible for making offers and holding waiting lists, an individual application must be made to each preferred school.

If you live in another borough, you can also apply for an Islington school using our online form.

Fair access

All local authorities are required to have a 'Fair Access Protocol' to ensure that children without a school place are found suitable education provision as quickly as possible. If there are no vacancies in any Islington schools, we may ask schools to go over their published admission number.

Children without education provision who also fall into one of the following categories may be eligible for admission under Islington's Fair Access Protocol:

1. Children from the criminal justice system or Pupil Referral Units who need to be reintegrated into mainstream education;
2. Children who have been out of education for two months or more;
3. Children of Gypsies, Roma, Travellers, refugees and asylum seekers;
4. Children who are homeless;
5. Children with unsupportive family backgrounds for whom a place has not been sought;
6. Children who are carers; and
7. Children with special educational needs, disabilities or medical conditions (but without an Education, Health and Care Plan).

Applications for school places under Islington's Fair Access Protocol are considered by a multi-agency panel which decides whether pupils should be admitted under the protocol, and which schools should be allocated.

Schools are allocated on a 'fair share' basis to ensure no individual school takes a disproportionate number of children under the protocol. Therefore, parental preference may not always be met.

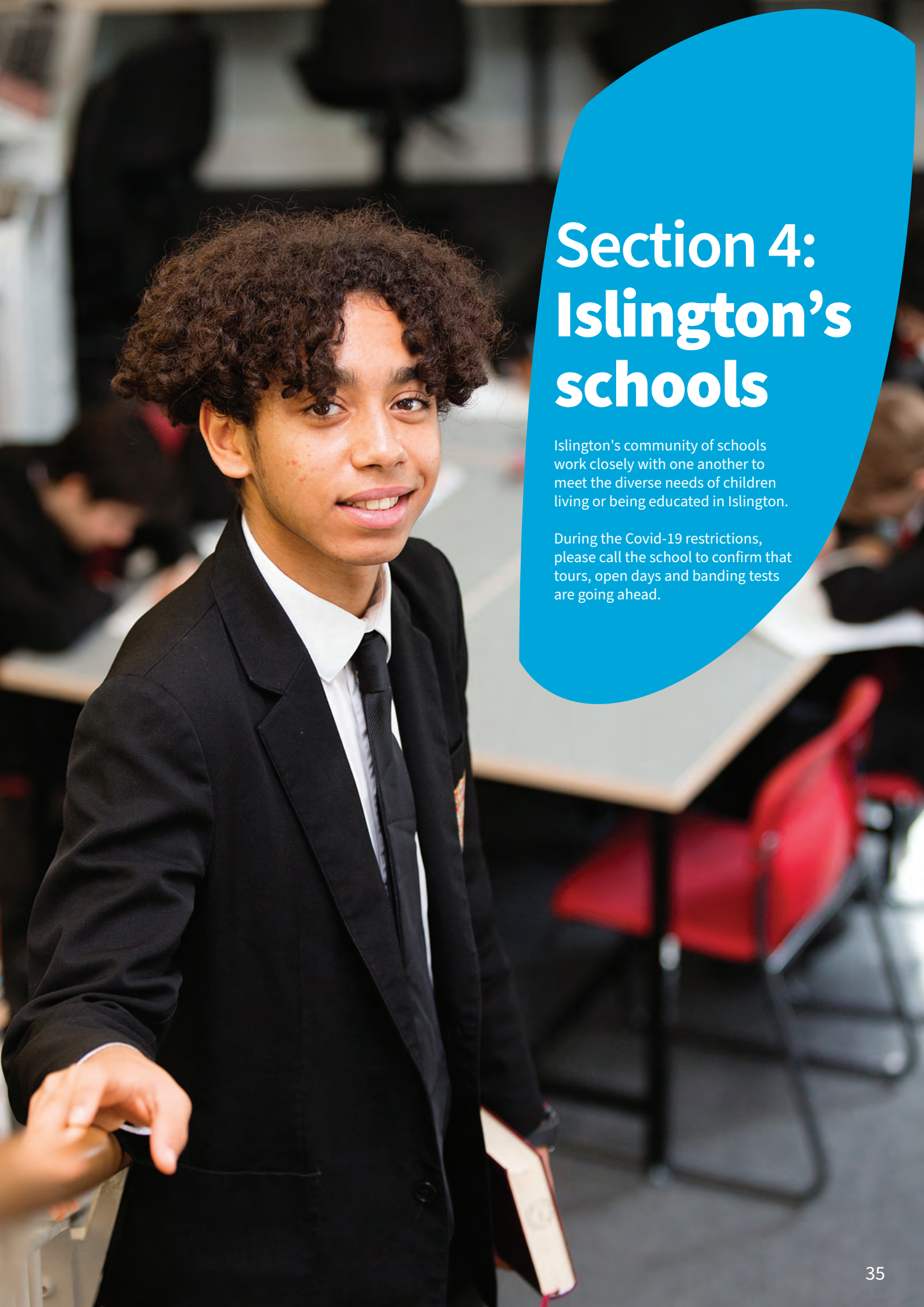
For further information, please contact the School Admissions team on 020 7527 5515 or view the [Fair Access Protocol](#).

Waiting lists

Please note that your child will remain on the waiting list until the end of the academic year in which the application is made unless you re-apply to extend this further.

To remain on the waiting list, you will need to complete Islington's online [In-year School Admissions Application](#).



A young man with curly hair, wearing a black school suit, white shirt, and dark tie, is smiling and looking towards the camera. He is holding a book under his arm. The background is a blurred classroom with other students and red chairs.

Section 4: Islington's schools

Islington's community of schools work closely with one another to meet the diverse needs of children living or being educated in Islington.

During the Covid-19 restrictions, please call the school to confirm that tours, open days and banding tests are going ahead.

Arts and Media School, Islington

Fact file

Head Teacher: Susan Service

Address: Turle Road, London N4 3LS

Map: [click here](#)

Bus routes: W3, 91, 210 or any bus to Finsbury Park station then a ten minute walk

Nearest station: Finsbury Park



Type of school:	Mixed Trust
Age range:	11-16 years
Specialism:	Performing Arts
Total number of places available at the school (Y7-Y11):	810
Number of places available in Year 7:	150
School start and finish times:	8.50am-3.20pm
Accessibility:	Fully accessible including lifts
Post 16 provision:	City and Islington College
Support for transition to Year 7:	Friendship morning, primary school visits, induction day and summer school
DfE Code:	206/4325
Admission criteria:	click here
Last pupil admitted under the distance criterion last year:	Does not apply

[Click here to calculate your home to school distance](#)

Website:	www.artsandmedia.islington.sch.uk
Contact name for admission enquiries:	Binny Keenan
Email:	b.keenan@amsi.school
Tel:	020 7281 5511
Open mornings:	School tour and Head teacher Q and A session: Every Thursday from 17 September to 27 October; 9.30am - 11.00am
Open evening:	1 October from 5.00pm to 7.30pm

Beacon High

Fact file

Executive Head Teacher: Jo Dibb

Head Teacher: Alan Streeter

Address: Hilldrop Road, London N7 0JG

Map: [click here](#)

Bus routes: 29, 253, 259, 279, 390, 393

Nearest station: Finsbury Park, Caledonian Road, Tufnell Park, Kentish Town (Tube), Kentish Town or Camden Town (Overground)



Type of school:	Mixed Community
Age range:	11-16 years
Specialism:	Specialist sports college
Total number of places available at the school (Y7-Y11):	720
Number of places available in Year 7:	120
School start and finish times:	8.40am-3.00pm
Accessibility:	Wheelchair access, lift, accessible toilets
Post 16 provision:	City and Islington College
Support for transition to Year 7: Year 6 Information Evening in June; induction day in July; individual intake meetings for all families; additional visits to the school if needed	
DfE Code:	206/4112
Admission criteria:	click here
Last pupil admitted under the distance criterion last year:	Does not apply

[Click here to calculate your home to school distance](#)

Website:	www.beaconhigh.org
Contact name for admission enquiries:	Ms Laura Scott
Email:	postbox@beaconhigh.org
Tel:	020 7607 5885
Open mornings:	15 and 23 September; 1, 9 and 12 October, 9.00am
Open evening:	24 September 5.00pm-7.00pm

Central Foundation Boys' School

Fact file

Head Teacher: Jamie Brownhill

Address: Cowper Street, London EC2A 4SH

Map: [click here](#)

Bus routes: 21, 43, 55, 76, 135, 141, 214, 243, 271

Nearest station: Old Street, Liverpool Street, Moorgate



Type of school:	Boys Voluntary-aided
Age range:	11-19 years
Total number of places available at the school (Y7-Y11):	(180, 180, 180, 180, 150) 810
Number of places available in Year 7:	180
School start and finish times:	8.55am-3.15pm
Accessibility:	Lift and wheelchair access (partial), accessible toilets
Post 16 provision:	Islington Sixth Form Consortium
Support for transition to Year 7:	Induction Day in June, Transition Days in September
DfE Code:	206/4614
Admission criteria:	click here
Last pupil admitted under the distance criterion last year	Band 1: 1.205 miles Band 2: 1.524 miles Band 3: 2.244 miles Band 4: 1.671 miles

[Click here to calculate your home to school distance](#)

Website:	www.centralfoundationboys.co.uk
Contact name for admission enquiries:	Richard Williams
Email:	admissions@cfbs.islington.sch.uk
Tel:	020 7253 3741
Open mornings:	Please see school website for further information
Open evening:	Please see school website for further information
Banding Tests:	Please see school website for further information

City of London Academy, Highbury Grove

Fact file

Principal: Ms A Lyall

Address: 8 Highbury Grove, London N5 2EQ

Map: [click here](#)

Bus routes: 4, 19, 30, 43, 236, 271, 277, 393

Nearest station: Highbury & Islington, Canonbury



Type of school:	Mixed Academy
Age range:	11-19 years
Specialism:	Specialist Music School
Total number of places available at the school (Y7-Y11):	1140
Number of places available in Year 7:	240
School start and finish times:	8.40am-3.00pm
Accessibility:	Fully accessible building
Post 16 provision:	Islington Sixth Form Consortium
Support for transition to Year 7:	One-to-one transition interview, school visits, induction week, British Museum transition project
DfE Code:	206/4003
Admission criteria:	click here
Last pupil admitted under the distance criterion last year:	Does not apply
Click here to calculate your home to school distance	

Website:	www.highburygrove.colala.org.uk
Contact name for admission enquiries:	Rachael Simmons
Email:	rsimmons@highburygrove.colala.org.uk
Tel:	020 7288 8900
Open mornings:	30 September, 7 and 14 October; 9.00am-10.00am
Open evening:	24 September from 4.30pm-8.00pm

City of London Academy, Highgate Hill

Fact file

Principal: Mr P Gennuh

Address: Holland Walk, London N19 3EU

Map: [click here](#)

Bus routes: 4, 10, 41, 43, 91, 134, 135, 143, 149, 210, 263, 271, C11, C12

Nearest station: Archway (Tube) or Upper Holloway (Overground)



Type of school: Mixed Academy

Age range: 11-18 years

Total number of places available at the school (Y7-Y11): 700

Number of places available in Year 7: 140

School start and finish times: 8.40am-2.55pm Mon, Thu, Fri; 8.40am-3.55pm Tue and Wed

Accessibility: Fully accessible buildings

Support for transition to Year 7:

Half day visit to academy during summer term; Primary school visits; Transition interviews; 2 days' induction in September; Year 7 parent social evening in October

DfE Code: 206/4001

Admission criteria: [click here](#)

Last pupil admitted under the distance criterion last year:	Band 1: 1.180 miles	Band 2: 0.906 miles
	Band 3: 0.819 miles	Band 4: 0.733 miles

[Click here to calculate your home to school distance](#)

Website: www.highgatehill.colala.org.uk

Contact name for admission enquiries: Tara Habbershaw

Email: enquiries@highgatehill.colala.org.uk

Tel: 020 7281 3536

Open mornings: 24 September - 2 October, 9.00am-10.30am

Open evening: 23 September, 4.30pm-7.00pm

Banding Tests: 3, 10, 17 and 24 October 9.00am-5.00pm

City of London Academy, Islington

Fact file

Principal: Ms Sonia Jacob

Address: Prebend Street London N1 8PQ

Map: [click here](#)

Bus routes: 4, 19, 30, 38, 43, 56, 73, 76, 141, 271

Nearest station: Angel, Essex Road or Highbury and Islington



Type of school:	Mixed Academy
Age range:	11-19 years
Total number of places available at the school (Y7-Y11):	825
Number of places available in Year 7:	165
School start and finish times:	8.40am-3.00pm
Accessibility:	Wheelchair access, lift, accessible toilets
Post 16 provision:	Islington Sixth Form Consortium
Support for transition to Year 7:	Primary school visits to aid transition, taster day and parents evening for all new students, induction programme in September
DfE Code:	206/6906
Admission criteria:	click here
Last pupil admitted under the distance criterion last year:	Band 1: 0.675 miles Band 2: 1.116 miles Band 3: 0.696 miles Band 4: 0.799 miles

[Click here to calculate your home to school distance](#)

Website:	www.colai.org.uk
Contact name for admission enquiries:	Ms Karen Becker
Email:	info@cityacademyislington.org.uk
Tel:	020 7226 8611
Open mornings:	24 September; 1, 8, 15 October; 9.00am and 9.30am
Open evening:	22 September, 4.30pm-8.00pm
Banding Tests:	3 and 17 October. Please see the school's website for further details

Elizabeth Garrett Anderson School

Fact file

Executive Head Teacher: Ms J Dibb

Head Teacher: Ms S Beagley

Associate Head Teacher: Ms T Southall

Address: Donegal Street, London N1 9QG

Map: [click here](#)

Bus routes: 4, 19, 30, 38, 43, 56, 73, 153, 214, 341, 394, 476

Nearest station: Angel



Type of school:	Girls Community
Age range:	11-16 years
Specialism:	Teaching School
Total number of places available at the school (Y7-Y11):	900
Number of places available in Year 7:	180
School start and finish times:	8.50am-3.25pm (3.05 pm on Thursdays)
Note: This may be subject to change owing to Covid-19 restrictions	
Accessibility:	Fully accessible
Post 16 provision:	City and Islington College
Support for transition to Year 7:	Primary visits, admissions interview, taster morning, parents' evening, summer school, solo student event, Year 7 only first day, Year 7 families garden party
DfE Code:	206/4324
Admission criteria:	click here
Last pupil admitted under the distance criterion last year:	0.907 miles

[Click here to calculate your home to school distance](#)

Website:	www.egaschool.co.uk
Contact name for admission enquiries:	Dominique Plumley
Email:	admin@egas.org.uk
Tel:	020 7837 0739
Open afternoon / evening:*	7 October from 2.00pm-7.00pm
Open mornings: *	22, 29 and 30 September; 6, 13 and 20 October, 9.15am

Highbury Fields School

Fact file

Head Teacher: Tim Fox

Address: Highbury Hill, London, N5 1AR

Map: [click here](#)

Bus routes: 4, 19, 30, 43, 43x, 236, 263, 271, 277, 279, 341

Nearest station: Drayton Park, Arsenal, Highbury and Islington



Type of school:	Girls Community
Age range:	11-18 years
Specialism:	Science
Total number of places available at the school (Y7-Y11):	700
Number of places available in Year 7:	140
School start and finish times:	8.50am-3.20pm
Accessibility:	Lifts to all curriculum areas, accessible toilets
Post 16 provision:	Islington Sixth Form Consortium
Support for transition to Year 7:	Every student is visited in year 6; Individual interviews; Information evening for parents; Transition day; Year 7 welcome evening
DfE Code:	206/4307
Admission criteria:	click here
Last pupil admitted under the distance criterion last year:	0.692 miles
Click here to calculate your home to school distance	

Website:	www.highburyfields.islington.sch.uk
Contact name for admission enquiries:	Ms O'Hara
Email:	office@highburyfields.islington.sch.uk
Tel:	020 7288 1888

Open Season: Parents should refer to the school website for information about Open Season if the Covid-19 restrictions remain in place, the school will hold a virtual tour.

St Aloysius' College

Fact file

Head Teacher: Paula Whyte

Address: Hornsey Lane, Highgate N6 5LY

Map: [click here](#)

Bus routes: C11, W5, 10, 43, 91, 134, 143, 210, 263, 271

Nearest station: Archway or Highgate



Type of school:	Boys Voluntary-aided Catholic
Age range:	11-19 years
Specialism:	Maths and Computing
Total number of places available at the school (Y7-Y11):	900
Number of places available in Year 7:	180
School start and finish times:	8.35am-3.05pm
Accessibility:	Fully accessible building
Post 16 provision:	Sixth Form
Support for transition to Year 7:	Primary school visit with Year Head, parent transition evening, Induction Day in July
DfE Code:	206/4651
Admission criteria:	click here
Supplementary Information Form:	click here
Last pupil admitted under the distance criterion last year:	Band 1: Does not apply Band 2: Does not apply Band 3: Does not apply Band 4: Does not apply
Click here to calculate your home to school distance	

Website:	www.sta.islington.sch.uk
Contact name for admission enquiries:	Andre Charlemagne
Email:	enquiries@sta.islington.sch.uk
Tel:	020 7561 7800
Open mornings:	6, 7, 8 October, 9.15am-10.30am
Open day:	Saturday 26 September, 9.00am-11.00am
Open evening:	Thursday 24 September, 5.00pm-8.00pm
Test dates:	1, 2 October, 9.00am-11.30am. By appointment only. Please see the school's website.
Music auditions:	2 Oct, 12.00pm-3.00pm. By appointment only. Please see the school's website.

St Mary Magdalene Academy

Fact file

Head Teacher: Victoria Linsley

Address: Liverpool Road, London N7 8PG

Map: [click here](#)

Bus routes: 4, 19, 30, 38, 43, 153, 271

Nearest station: Highbury and Islington



Type of school:	Mixed Church of England Academy
Age range:	5-18 years
Specialism:	Humanities and Global Citizenship
Total number of places available at the school (Y7-Y11):	960
Number of places available in Year 7:	210 (30 places are reserved for pupils attending the primary phase of the Academy)
School start and finish times:	8.40am-4.30pm (Year group differences may apply)
Accessibility:	Fully accessible
Post 16 provision:	The Academy Sixth Form
Support for transition to Year 7:	Induction Day and Off-site Team Building Day
DfE Code:	206/6905
Admission criteria:	click here
Last pupil admitted under the distance criterion last year:	Open: 0.376 miles Foundation: 1.038 miles

[Click here to calculate your home to school distance](#)

Website:	www.smmacademy.org
Contact name for admission enquiries:	Birte Rohloff
Email:	admissionsregistrar@smmacademy.org
Tel:	020 7697 0123
Morning Tours:	Everyday from 14 September - 16 October (Bookings only via website)
Governors' Aptitude Place information evening:	Monday 14 September (possible live stream)
Open evening:	Thursday 8 October - Headteacher's talk (possible live stream)
Test dates:	3 and 4 October: Please complete the application form here

Dame Alice Owen's School, Potters Bar

Fact file

Each year a small number of places at Dame Alice Owen's School in Hertfordshire are offered to Islington residents. If you are considering applying to Dame Alice Owen's School, please visit the school website which contains detailed information. You can also telephone the school or Hertfordshire County Council on **0300 123 4043**.

Head Teacher: Mrs Hannah Nemko

Address: Dugdale Hill Lane, Potters Bar, EN6 2DU

Map: [click here](#)

Nearest station: Potters Bar

Type of school: Mixed Academy

Age range: 11 – 18 years

Specialism: Languages, science



Total number of places available at the school:	1433
-------------------------------------------------	------

Number of places available in Year 7:	200
---------------------------------------	-----

A minimum of 20 places will be allocated to Islington residents

School start and finish times:	8.45am-3.45pm
--------------------------------	---------------

Accessibility:	Please refer to our website for further information
----------------	-----------------------------------------------------

Post 16 provision:	Yes – Sixth Form
--------------------	------------------

DfE Code:	919/5407
-----------	----------

Admissions criteria:	click here
----------------------	----------------------------

Website:	www.damealiceowens.herts.sch.uk
----------	--------------------------------------------------------------------------------------

Contact name for admission enquiries:	Mrs Coles
---------------------------------------	-----------


Email:	admissions@damealiceowens.herts.sch.uk
--------	----------------------------------------------------------------------------------------------------

Tel:	01707 643441
------	--------------

Open mornings:	Please refer to our website for information about school tours
----------------	----------------------------------------------------------------

Open day:	16 July 2.00pm-5.00pm
-----------	-----------------------

Test dates:	1 September (Verbal Reasoning); 28 September (Music); 26 September (Round 2) Eng; Maths
-------------	-----------------------------------------------------------------------------------------



Section 5: Sixth Form options

City and Islington Sixth Form College

Fact file

With close to 30 years of long-standing history within London for delivering post-16 education, each centre is focused on running study programmes in particular subject areas and each has its own vibrant courses and qualifications and each has its own community of students, teachers and support staff. As part of the overall study programme, your child will participate in work-related learning, extracurricular activities, English and/or maths support, giving them an independent learning experience in a supportive environment.

Your child will have a seamless journey through education with a high quality of care throughout. Our students achieve excellent A-Level results and vocational courses.

Curriculum offer:

A-levels in over 35 different subjects; vocational courses (such as BTECs and other diplomas) and Apprenticeships

Address: The college has five centres in North London. Find out more [here](#).

Bus routes: 4, 17, 19, 29, 30, 38, 43, 56, 73, 91, 106, 153, 205, 210, 214, 236, 253, 254, 259, 271, 274, 279, 341, 393, 394, 476, W3, W7

Nearest station: Angel, Finsbury Park, Holloway Road

Admissions policy:

A-level places are in high demand and we encourage you to apply before the end of January. Applications for all other courses are open all year round. Enrollment onto our courses take place in August.

For more information:

Contact name for admission enquiries: (See telephone and email below)

Email: courseinfo@candi.ac.uk

Tel: 020 7700 9200

Website: www.candi.ac.uk

Islington Sixth Form Consortium (IC6)

Fact file

IC6 was established in 2004 and is the joint sixth forms of Central Foundation Boys' School, City of London Academy Highbury Grove, City of London Academy Islington and Highbury Fields School. At IC6 we ensure excellent results and an outstanding sixth form education in a friendly, supportive and productive learning environment. The IC6 umbrella enables our students not only to progress academically but also, and most importantly, to become equipped to contribute to their communities. All IC6 schools' sixth forms have received Good or Outstanding ratings from Ofsted.

Curriculum offer:

A-Level courses; BTEC courses (Level 2 and Level 3); Cambridge Technical Qualifications (Level 3 Foundation and Extended Diploma); Retakes in GCSE Maths and English

Address: Islington Sixth Form Consortium, c/o Central Foundation Boys' School, Cowper St, London EC2A 4SH

Map: [click here](#)

Bus routes: 43 (Old Street station for Central Foundation Boys' School; Highbury and Islington station for City of London Academy, Highbury Grove and Highbury Fields School; Angel for City of London Academy Islington)

271 (Old Street for Central Foundation Boys' School; Highbury and Islington for City of London Academy, Highbury Grove, Highbury Fields School; Essex Road for City of London Academy Islington)

Nearest stations: Old Street (Central Foundation Boys' School), Angel or Essex Road (City of London Academy Islington), Highbury and Islington (City of London Academy, Highbury Grove and Highbury Fields School)

Admissions policy: [Click here](#)

For more information:

Contact name for admission enquiries: Tsungayi Mhizha

Email: administration@ic6.co.uk

Tel: 020 7017 3040

Website: www.ic6.co.uk

Open Evening: Prospective applicants to visit the iC6 website.

London Screen Academy (LSA)

Fact file

LSA is a sixth form academy for London students that opened in September 2019, teaching the skills and background knowledge needed to join the screen industries (which include film and television), to progress to higher education or to enter other professions. Storytelling is at the heart of everything we do.

LSA is unique and exciting; never has there been such a partnership between outstanding educators and global screen industry leaders. Our students are taught by London's best teachers and people who make their living working in the screen industries.

Curriculum offer:

Year 1: In the first year LSA's curriculum will provide students with a broad knowledge of the many skills and disciplines within the screen industries.

Year 2: In the second year students may choose to specialise in a specific area. Across both years all students will be taught storytelling as an integral part of the visual creative process. They will also explore the cultural and historical significance of film and television. LSA students will learn to improve their communication skills, work constructively within a team, gain basic business knowledge and develop self-management skills.

Address: Ladbroke House, 62-66 Highbury Grove, Islington, London N5 2AG

Map: [click here](#)

Bus routes: 4, 19, 36, 263

Nearest stations: Highbury and Islington, Drayton Park, Canonbury, Holloway Road

Admissions policy: [Click here](#)

For more information:

Contact name for admission enquiries: Charlie Kennard

Email: enquiries@LSA.ac.uk

Tel: 020 7788 8132

Website: www.LSA.ac.uk

St Aloysius' College Sixth Form

Fact file

Our Sixth Form presents you with a unique opportunity to further your studies in a first class learning environment. The Sixth Form is a distinct group of students that forms an extension of our successful school and tradition of 'Achieving Excellence with Care'. St Aloysius' College students and staff work together to ensure that every student fulfils their potential. Attention to personal development and outstanding academic achievement enables our students to progress to higher education and successful future careers.

As a Sixth Form student you will work in partnership with your teachers, and develop relationships with your tutors that are supportive and based on mutual respect. Learning in smaller classes, you will be encouraged to read beyond the curriculum, to work and think independently, and to be self-disciplined in your studies.

As a Catholic community we endeavour to respect whatever faith tradition people come from, and will support all members of our community in their faith journey.

Curriculum offer:

The Sixth Form offers a wide range of academic A-level courses. We also offer a range of Level 3 vocational courses. In addition to a wide range of subjects on offer in the Sixth Form there are opportunities for you to be involved in exciting and challenging activities outside the classroom.

Students who choose the academic A-Level route will typically study three subjects, while those who prefer a more vocational route will embark on a combination of three, Level 3 BTEC subjects.

Address: Hornsey Lane, Highgate, London, N6 5LY

Map: [click here](#)

Bus routes: C11, W5, 10, 43, 91, 134, 143, 210, 263, 271

Nearest station: Archway, Highgate

Admissions policy: [Click here](#)

For more information:

Contact name for admission enquiries: Maggie Vaughan

Email: enquiries@sta.islington.sch.uk

Tel: 020 7561 7800

Website: www.sta.islington.sch.uk

St Mary Magdalene Academy Sixth Form

Fact file

Happy successful students are important to us. Our priority is to ensure that all Sixth Formers reach their potential and leave us in the best position to be highly successful adults. For young people to reach their potential, we believe they need high quality academic teaching and a creative, dynamic and supportive pastoral programme. These ingredients mean that all our learners become reflective and skilled students who organise themselves superbly and are well prepared to meet the challenges of A Levels and the Extended Project Qualification (EPQ).

Our students benefit from an exceptional range of personal and professional opportunities including workshops with Deloitte Consulting, UCAS and study skills sessions. We provide a wonderful hub for students to engage with new opportunities. Students join us from all over the world, including a cohort of Swiss students who provide new friendships and global insights every year.

Curriculum offer:

A-Level: Art, Biology, Chemistry, Computer Science, Drama, Economics, English Literature, French, Geography, German, History, Mandarin (Cambridge Pre-U), Mathematics, Further Mathematics, Music, Philosophy, Politics, Psychology, Sociology, Spanish and the Extended Project Qualification (EPQ).

Address: Liverpool Road, London N7 8PG

Map: [click here](#)

Bus routes: 4, 19, 30, 38, 43, 153, 271

Nearest station: Highbury and Islington, Holloway or Caledonian Road

Admissions policy: [Click here](#)

For more information:

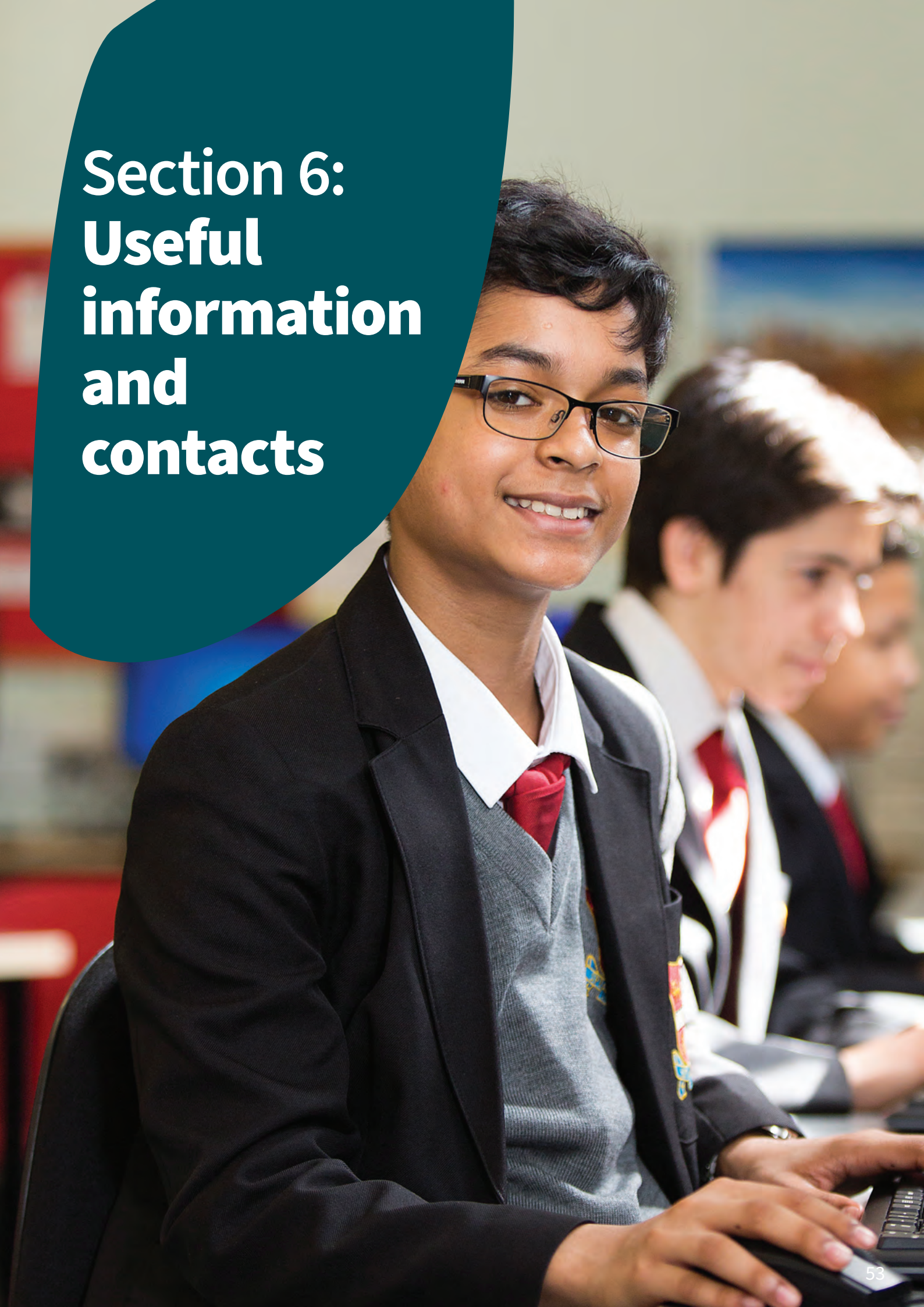
Contact name for admission enquiries: Birte Rohloff

Email: admissionsregistrar@smmacademy.org

Tel: 020 7697 0123

Website: www.smmacademy.org

Section 6: Useful information and contacts



Are you 16-19 and living in Islington? Need help to get into education, training or employment?

★ ★ ★
**ISLINGTON'S
PROGRESS
PLEDGE**

We pledge to help you by offering...

- Careers guidance with our qualified advisers
- Job coaching
- Mock interviews
- Support in English and maths up to Level 2
- One-to-one support to help you into education, a traineeship or apprenticeship, or employment
- Up to 100 hours of work experience or volunteering
- Help to access other support services

Contact the Progress team on **0207 527 7031**
or email **progress@islington.gov.uk**



Financial assistance

Free School Meals

As you begin to prepare for your child's move to secondary school in September, we would like to remind you about the benefit of Free School Meals. If you are eligible to claim for Free School Meals we encourage you to apply. Applying for Free School Meals means that you save on lunch costs and at the same time raise additional funding for your child's school. There is no commitment for children to eat a school meal every day but for every child eligible the school will receive £955 of extra funding. This helps schools to provide valuable support such as extra tuition, learning assistants and after-school clubs.

Your child may be eligible if you receive any of the following benefits: Income Support, Income-based Jobseeker's Allowance, Income-based Employment and Support Allowance, Child Tax Credit if your taxable income is less than £16,190 and you do not receive Working Tax Credit, The Guarantee Element of State Pension Credit Support under Section VI of the Immigration and Asylum Act 1999.

Criteria have been extended to include Universal Credit. To qualify, your household income must be less than £7,400 a year after tax and not include any other benefits.

If you receive Working Tax Credit, you are not eligible to claim for Free School Meals unless you have stopped working in the last four weeks.

If your child is eligible for Free School Meals, they'll remain eligible until they finish their current phase of schooling (primary or secondary).

If you also have younger children don't forget that all pupils attending an Islington primary school are eligible for Free School Meals.

Uniform grant


The council offers £150 to eligible Islington parents to help meet the cost of school uniforms at secondary transfer and covers children transferring to an Islington or out of borough secondary school. The grant is available to Islington residents whose children are eligible for Free School Meals under the national criteria.

For more information on Free School

 Meals and Uniform Grant:

www.islington.gov.uk/

 freeschoolmeals

 FreeSchoolMeals@islington.gov.uk

020 7527 5483

020 7527 3196

Islington year 12 bursary

Young people going into year 12 are eligible for a £300 bursary to help them start further education. The council is topping up the financial support offered through sixth form schools and colleges by the Education Funding Agency to students who might otherwise have to drop out of education due to lack of funds. To qualify, students must be an Islington resident, have received free school meals in year 11, have moved immediately into post 16 education and training without taking a break and be studying full time. [Find out more.](#)



Additional educational needs

Our secondary schools welcome and provide for all children so, whatever your child's needs, they can fully participate in school life.

We believe that all our students are entitled to a rich and diverse curriculum that is tailored to meet each child's individual needs.

For Islington's high achieving students, our schools develop children's aptitudes, skills and attainment through a varied programme of advanced learning, competitions and challenges.

For those with special educational needs, schools encourage and support children to become confident learners and celebrate their achievements as valued members of the school community.

For children with English as an additional language, schools ensure that their language development needs are met with high quality language-rich classroom practice,

effective induction systems and targeted interventions. This work is supported by trained specialist teachers, teaching assistants and bilingual parent support assistants who ensure these high achieving students are able to access the curriculum.

The best way to find out whether a particular school would suit your child is to visit the school and see for yourself.

Please see [Islington's Local SEND Offer](#) for more information, or contact 020 3031 6651 / 6652 for independent SEND support and advice.

Attendance matters: every day counts!

Good attendance and punctuality provide the best chance for your child to achieve success. The evidence speaks for itself:

Attendance	Learning missed	Predicted impact on outcomes
95%	45 hours OR 9 days OR 1 week and 4 days	77% achieve 5+ GCSEs
85%	140 hours OR 28 days OR 5 weeks and 3 days	32% achieve 5+ GCSE

Did you know that being 10 minutes late, every day adds up to 32 hours of lost learning a year, that’s the equivalent of 6 days and 2 hours!
Every day really does count.

A borough-wide approach

Islington’s ‘community of schools’ is committed to securing good attendance and punctuality for your child. This means that term-time holidays will not be authorised (unless there are exceptional circumstances), and every absence will be followed up with you. Schools will work with you to improve your child’s attendance, but ultimately the legal duty to secure regular school attendance sits with parents. In some cases, where attendance fails to improve, this may result in penalty notices (fines) or prosecution.



Getting to school

Islington has a great network of bus, tube and rail links making it easy to get to any of Islington's schools.

Sustainable travel

Islington Council is working with schools to promote safer, healthier and more environmentally friendly ways to travel.

We want to:

- make cycling and walking safer and more attractive
- increase the number of school pupils using local bus services
- reduce traffic congestion around schools
- develop partnerships with schools, their communities and other organisations
- promote the development of school travel plans
- promote safety through education and training
- promote the health benefits of walking and cycling
- promote sustainable travel choices by ensuring any new schools are accessible by walking, cycling and public transport.

The main way we do this is through the creation of school travel plans.

A school travel plan will look at the journeys pupils make to get to, and home from, school and why they make certain travel and transport choices. With this information we can work with schools to find practical solutions to encourage safe, healthy and environmentally-friendly travel choices.

For more information on School Travel Plans, please contact the Traffic and Safety Team: schooltravelplans@islington.gov.uk or 020 7527 2513.

Try Before You Bike

If you are thinking of starting cycling, try a bike from £20 per month.

The [Try Before You Bike](#) scheme allows you to try a bike for a monthly fee. Just choose your new bike and accessories using the helpful online tools, the bike gets delivered to you and you will be given a free Cycle Skills session before you get started.

Pay the monthly fee until you have fully bought the bike or return it at any stage.

Glossary

Academies

Academies are independently managed, all-ability schools. The governing body sets its own admissions criteria, in line with the statutes laid down in the School Admissions Code.

Admission Authority

The body responsible for deciding the admission criteria and for allocating school places. In the case of community schools, this is the local authority and in the case of voluntary-aided schools, Free Schools and Academies it is the school's governing body.

Admission Criteria (or Oversubscription Criteria)

The rules by which applications will be prioritised for admission when there are more applicants than places available. These rules must be published on the school's website.

Children looked after/Previously looked after

Children who are in the care of local authorities (councils) as defined by section 22 of the Children Act 1989. In relation to school admissions' legislation a child is considered to be a 'looked after child' if the local authority confirms he or she will be in public care when they are admitted to a school. This criterion also applies to children who have been adopted (or subject to

a child arrangements order or special guardianship order) immediately following having been looked after.

Community schools

Community schools are run by the local authority which employs the staff and owns the land and buildings. Islington Council sets the admissions criteria for community schools.

Cut-off distance

The last pupil admitted under the distance criterion. Maps are available at www.islington.gov.uk/admissionsDistance

Distances for Islington's community schools will be measured in a straight line (as the crow flies) from the home address to the midpoint of the school grounds, using the local authority's computerised measuring system. Those living closer to the school will receive higher priority.

Education, Health and Care Plan (EHCP)

These are legal documents issued by the local authority detailing the particular needs, resources and provision required to support the child, and can include a named school that is suitable for providing education for that child. EHCPs will continue into further education and training, and

for some young people, in order to complete a course or qualification, up to the age of 25.

Equal Preference Scheme / System

Each preference is considered independently against the school's published admission criteria. If the applicant is eligible for admission to more than one school, the highest preference school is offered.

Family Information Service

[The Family Information Service \(FIS\)](#) gives free, impartial information, advice and guidance about services for children, young people and families in Islington. Find out about childcare, employment, benefits, support for disabled children and more.

Free schools

Free schools are independently managed, all-ability schools funded by the government. They are run on a not-for-profit basis and can be set up by charities, universities, independent schools, community and faith groups, teachers, parents and businesses. Free schools can change the length of school terms and the school day and do not need to follow the national curriculum.

Foundation schools

Foundation schools are run by their

own governing body, which employs the staff and sets the admissions criteria. Land and buildings are usually owned by the governing body or a charitable foundation.

Home local authority

A child's home local authority (local council) is the local authority where they live, i.e. the council you pay your council tax to.

PAN (Published Admission Number)

The number of school places that the admission authority must offer in each relevant age group.

PAN-London Register (PLR)

Secondary school places in London are co-ordinated through the Pan-London admissions scheme which aims to simplify the secondary application process and ensure a fairer distribution of places available across London. The system ensures that applicants receive only one offer on National Offer Day.

Parents and family members

A parent is any person who has parental responsibility or care of the child. Where admission arrangements refer to parent's attendance at church, it is sufficient for just one parent to attend. Family members include single parents and siblings.

Private fostering

Private fostering is when a child under the age of 16 (under 18 if disabled) is cared for by someone who is not their parent or a 'close relative'. This is a private arrangement made between a parent and a carer, for 28 days or more. Close relatives are defined as step-parents, grandparents, brothers, sisters, uncles or aunts. **Private foster carers have a duty to inform their home local authority of such arrangements. This must also be declared on the admissions application form. Please see the back page of this brochure for further information.**

Sibling

Sibling refers to a brother or sister, half-brother or sister, adopted brother or sister, step-brother or sister, or the child of the parent or carer's partner, living in the same family at the same address.

Supplementary Information Form (SIF)

All parents who list their preferred schools on the local authority's online admission application are regarded as having made a valid application.

A supplementary information form may also be required for applicants considered under the criteria of faith

schools, for boarding school and for selective schools. Please check the school's fact file for details.

Trust schools

A Trust school is a type of foundation school which forms a charitable trust with an outside partner. For example, a business or educational charity aiming to raise standards and explore new ways of working.

Voluntary-aided schools (VA)

Voluntary-aided schools are mainly religious or 'faith' schools, although anyone can apply for a place. As with foundation schools, the governing body employs the staff and sets the admissions criteria. School buildings and land are normally owned by a charitable foundation, often a religious organisation. The governing body contributes to building and maintenance costs.

Secondary Transfer 2020

School Key Dates

Test Dates - for times please refer to school website				
Dame Alice Owen's, Potters Bar	01-Sep		02-Sep	26-Sep
City of London Academy, Highgate Hill	3-Oct	10-Oct	17-Oct	24-Oct
City of London Academy, Islington	3-Oct		17-Oct	
Central Foundation Boys' School	Please refer to the school's website for further information			
St Mary Magdalene Academy	03-Oct		04-Oct	
St Aloysius' College	01-Oct		02-Oct	

Open Days and Evenings - for visits and tours, please refer to school website		
Dame Alice Owen's, Potters Bar	16-Jul	2.00-5.00pm
Central Foundation Boys' School	Please refer to the school's website for further information	
City of London Academy, Islington	22-Sep	4.30-8.00pm
City of London Academy, Highgate Hill	23-Sep	4.30-7.00pm
City of London Academy, Highbury Grove	24-Sep	4.30-8.00pm
Highbury Fields School	Parents should refer to the website for information about Open Season If the current measures are still in place, the school will hold a virtual tour and presentation	
St Aloysius' College	24-Sep	5.00-8.00pm
Arts and Media School, Islington	01-Oct	5.00-7.30pm
St Mary Magdalene Academy	08-Oct	possible live stream
Elizabeth Garrett Anderson School	07-Oct	2.00-7.30pm
Beacon High	24-Sep	5.00-7.00pm

Do you know someone who is under 16 and not living at home?



“My mother recently had an operation so I’m going to be staying with family friends for the next 3 months”



“Things got really bad at home, I would argue with my parents all the time. Now I live with my friend and her parents”



“I came to the UK on holiday but ended up living with my cousins. I’ve been in the UK for over 5 years now”

If you know a child in this situation or would like more information please call the Islington Children’s Services Contact Team on **020 7527 7400** or **csctreferrals@islington.gov.uk**



ISLINGTON